

Food Grade Water Pump VP35C

Application

- Water Dispenser.
- Coffer maker.
- Water Purifying Machine.
- Juice machines.
- Other drinking water equipment.

Feature

- Can endure 100°C high temperature.
- Ceramic sleeve ceramic shaft Long life Low noise.
- Meet FDA standards .
- Closed impeller, high pressure.
- All wetted materials is food grade.
- PWM/0~5V speed control function [optional].



Parameter

Parameter (only for reference, it can be customized)

Model	Voltage	Rated Current	Max flow	Max head	Power
	V	A	L/MIN	M	W
VP35C	12	0.27	4.5	1.5	3.3
	12	0.27	4.5	1.5	3.3
	24	0.35	7	3	8
	24	0.35	7	3	8

Remarks The parameters above are for reference only, the one based on the customer's endorsement demands shall prevail!

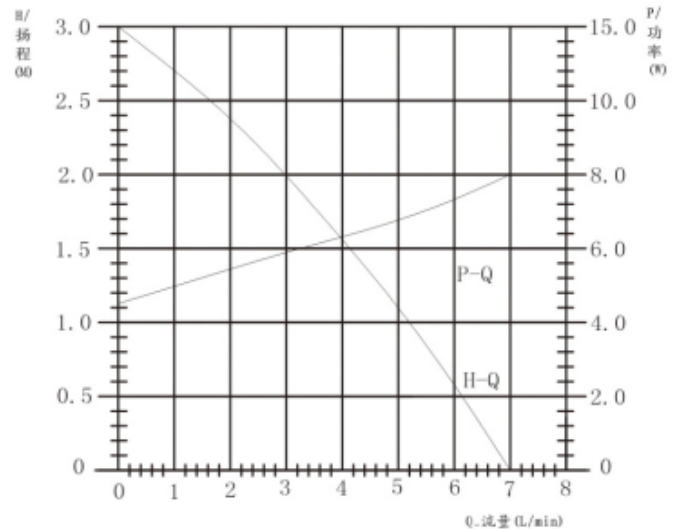
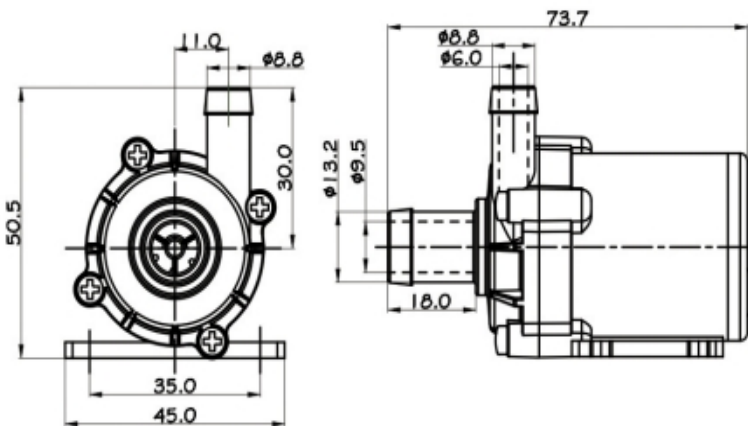
Notice

- Runs in the condition of the pump chamber without liquid is not allowed.
- Reversely connects the power polarity is not allowed.
- Filter measures should be taken when used in foul water environment.
- Runs in the acid and alkali environment is not allowed.
- Ambient temperature and fluid temperature should be within the rated temperature.

Specification

Specs

NO	Items	Specs
1	Sizes	73.7x45x50.5
2	Dimension of inlet	13.2mm
3	Dimension of outlet	8.8mm
4	Pump material	PPE
5	Condition of use	Continuously
6	Fluids	Water, oil [Provide acid and alkali solution]
7	Ambient temperature	-20~60°C
8	Max fluid temperature	0~100°C
9	Power consumption	6W~12W
10	Rated voltage	12V/24Vdc
11	Voltage used	8Vdc ~20Vdc, 12Vdc ~ 30Vdc
12	Noise	<35dB
13	Water proof class	IP68(Submersible installed optional)
14	Life span	More than 20000hrs
15	Power supply	Solar panel; DC electric source; battery



Dimension

Head-Flow curve graph